

### Marpower Drives



Electric drives onboard of ships should be reliable and must run cost-efficiently. Marpower offers a reliable solution for every electric drive on board. On customer specification we take care of the configuration and construction, transport and commissioning at the vessel.

We offer a modular and compact drive for each situation. Our drives can be used as flexible control of propulsion, bow- and sternthruster, pumps and winch systems. Marpower Drives can be made customer specific and can be placed anywhere on board, giving you flexibility in system setup. In combination with the modular construction, the system saves fuel and offers the shipbuilder more freedom in hull construction and ship layout.

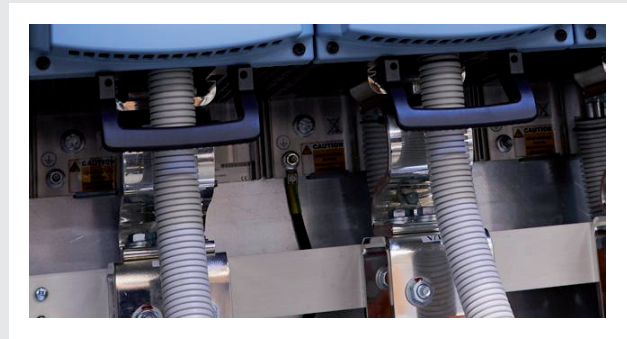
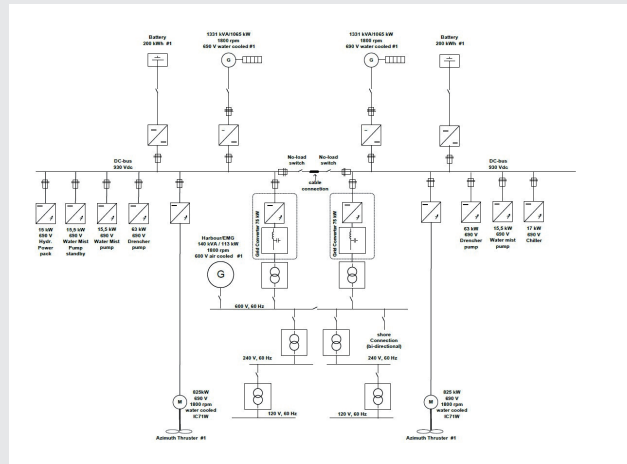
The variable speed ensures an optimal working area, high efficiency and less wear on rotating parts. The Marpower Drives can also be used as a grid converter (AC / DC and DC / DC conversion) for a regulation of energy flow on board.



#### Advantages of the Marpower Drives

- ✓ Approved by all major classification societies
- ✓ Flexible in design due to in-house panel construction
- ✓ Hardware-independent
- ✓ Air- and/or water-cooled
- ✓ Low voltage up to 5 MW, high voltage from 1 MW
- ✓ High reaction speed
- ✓ Energy-saving
- ✓ Custom built and customer-specific solutions
- ✓ Proven long lifespan, worldwide support
- ✓ Over 40 years of knowledge and experience with electric drives

Drive systems can be used for various applications such as industry, offshore, shipbuilding and special applications. For detailed information we refer you to our *Project Leaflets*, also available on our website [www.marpower.com](http://www.marpower.com).



## INPUT

Input line voltage	3x 440 - 690 Vac
Input line frequency	50/60 Hz
Line current	Depending on type

## OUTPUT

Output line voltage	3x 0-690 Vac
Frequency range	0-100,00 Hz / 0-200,00 Hz
Efficiency	> 98%
Power range	3,0 – 2000 kW (Air cooled) 7,5 – 5300 kW (Water cooled)

## GENERAL

Ambient temp.	40 °C (Up till 52,5 °C with reduction)
Protection degree	IP22 (Up till IP55 on request)
Interference protection	IEC 61800-3 (EN55011 Optional)
Interface	Profibus / Modbus - RTU Modbus - TCP